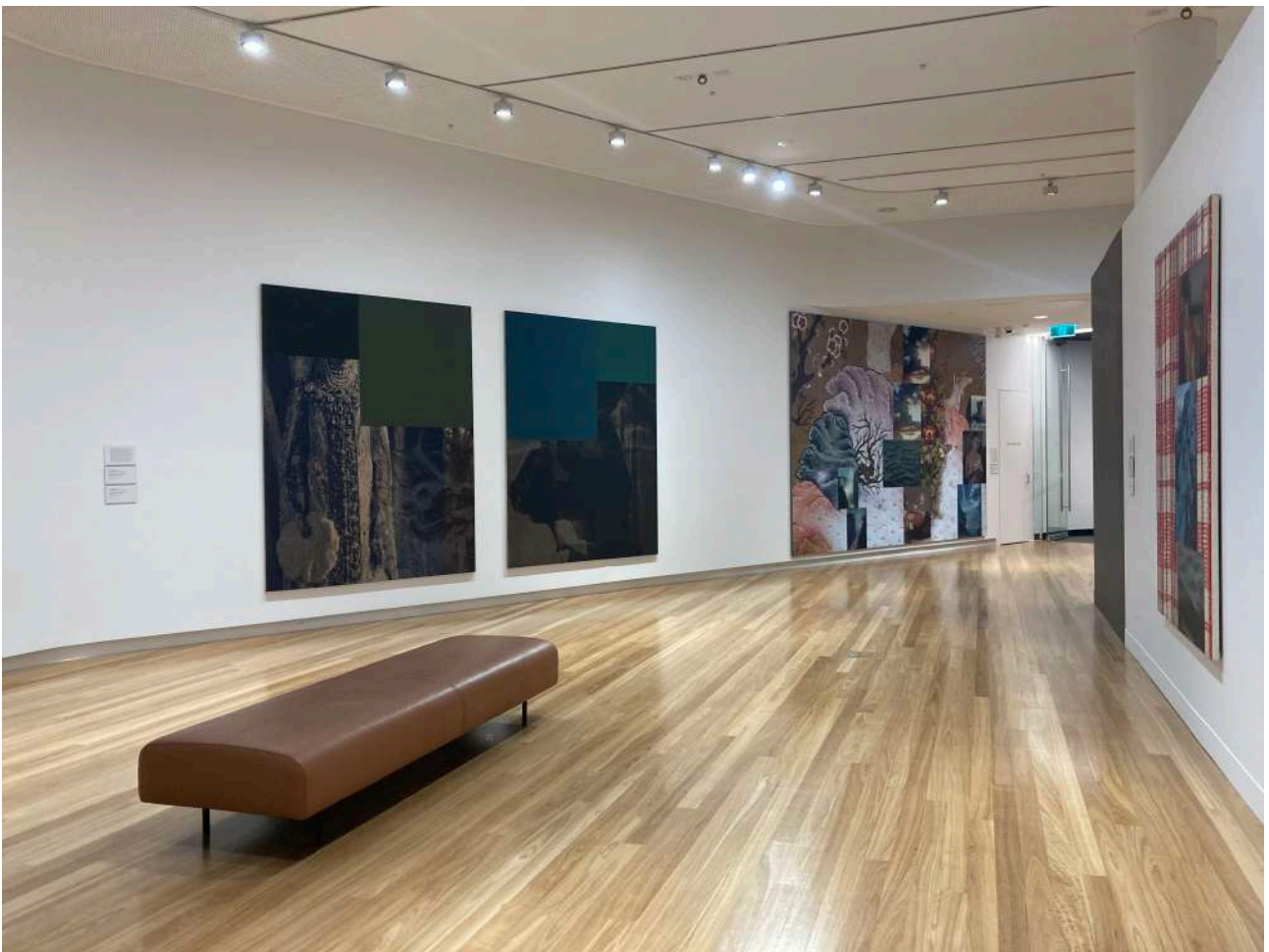


John Young: Disapora, Psyche at Bunjil Place Gallery



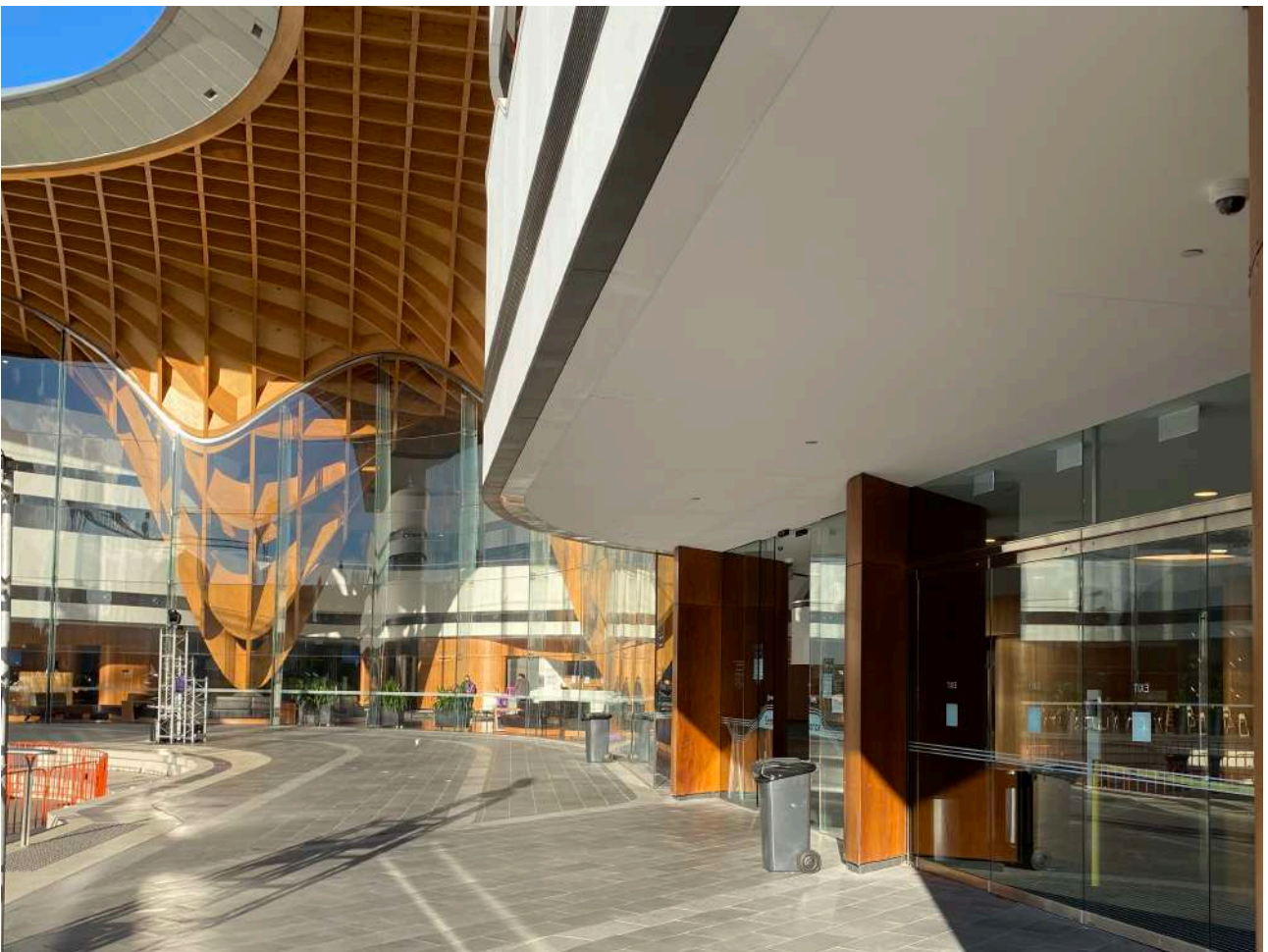
This is Bunjil Place.
You will see a sign for Bunjil Place out the front.



Inside Bunjil Place is a gallery. You will see the *John Young: Disapora, Psyche* exhibition inside.



When you are at the entrance, the glass sliding doors will open automatically so you can walk inside Bunjil Place.



There will be a front desk with friendly staff. They will greet you.



You can say hello to the staff. If you have any questions or you need help, you can ask them.

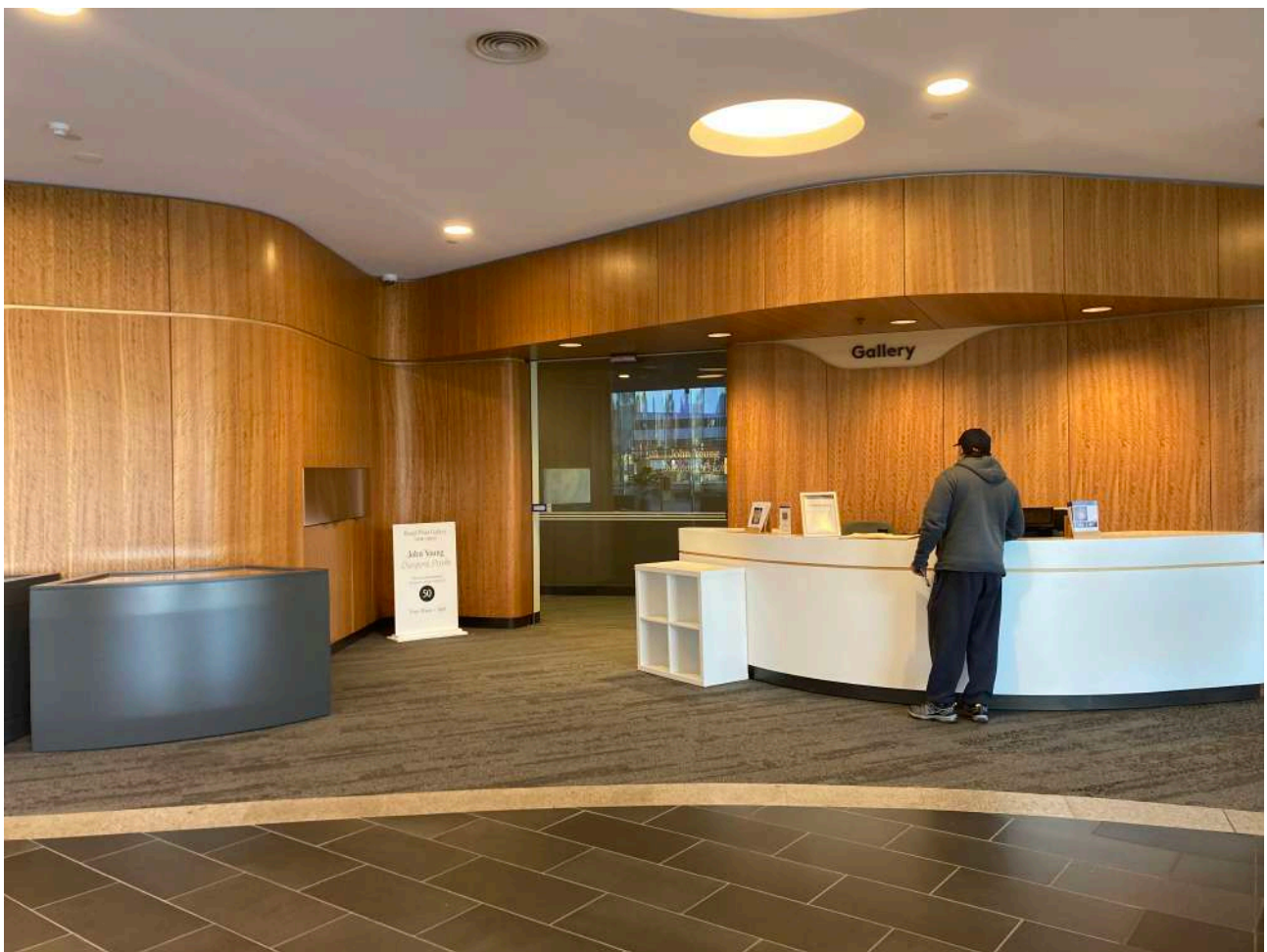


The staff member will check your ticket registration by asking for your surname for COVID-19 tracing purposes.

You will also check in the venue using the QR code.



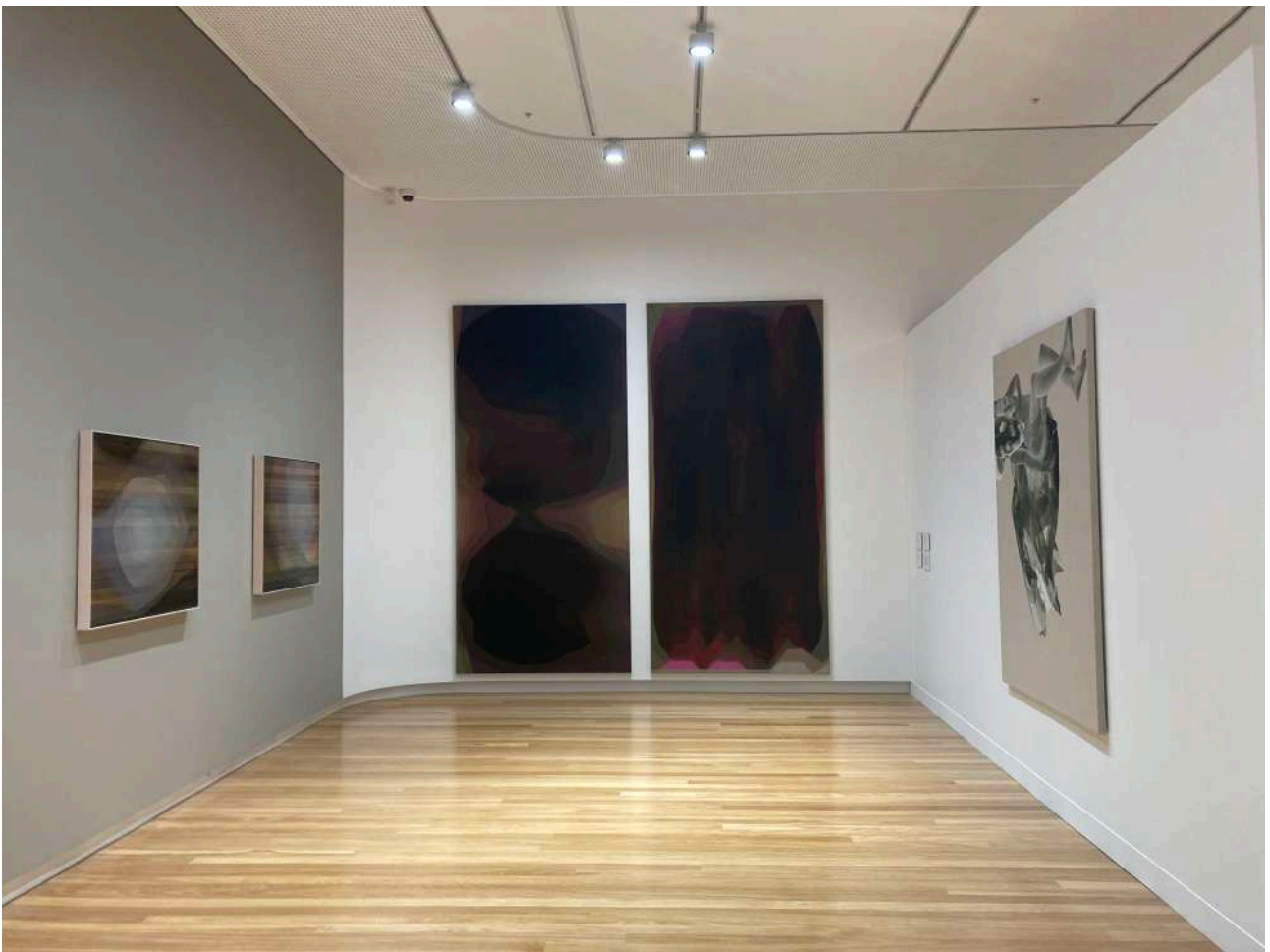
From the front desk, Bunjil Place Gallery is front of you. There is another automatic glass door that will slide open so you can enter.



There will be an open door. This is the entrance to the *John Young: Diaspora, Psyche* exhibition.



Inside the Gallery, you will see lots of different types of artwork. There are big artworks and smaller artworks.



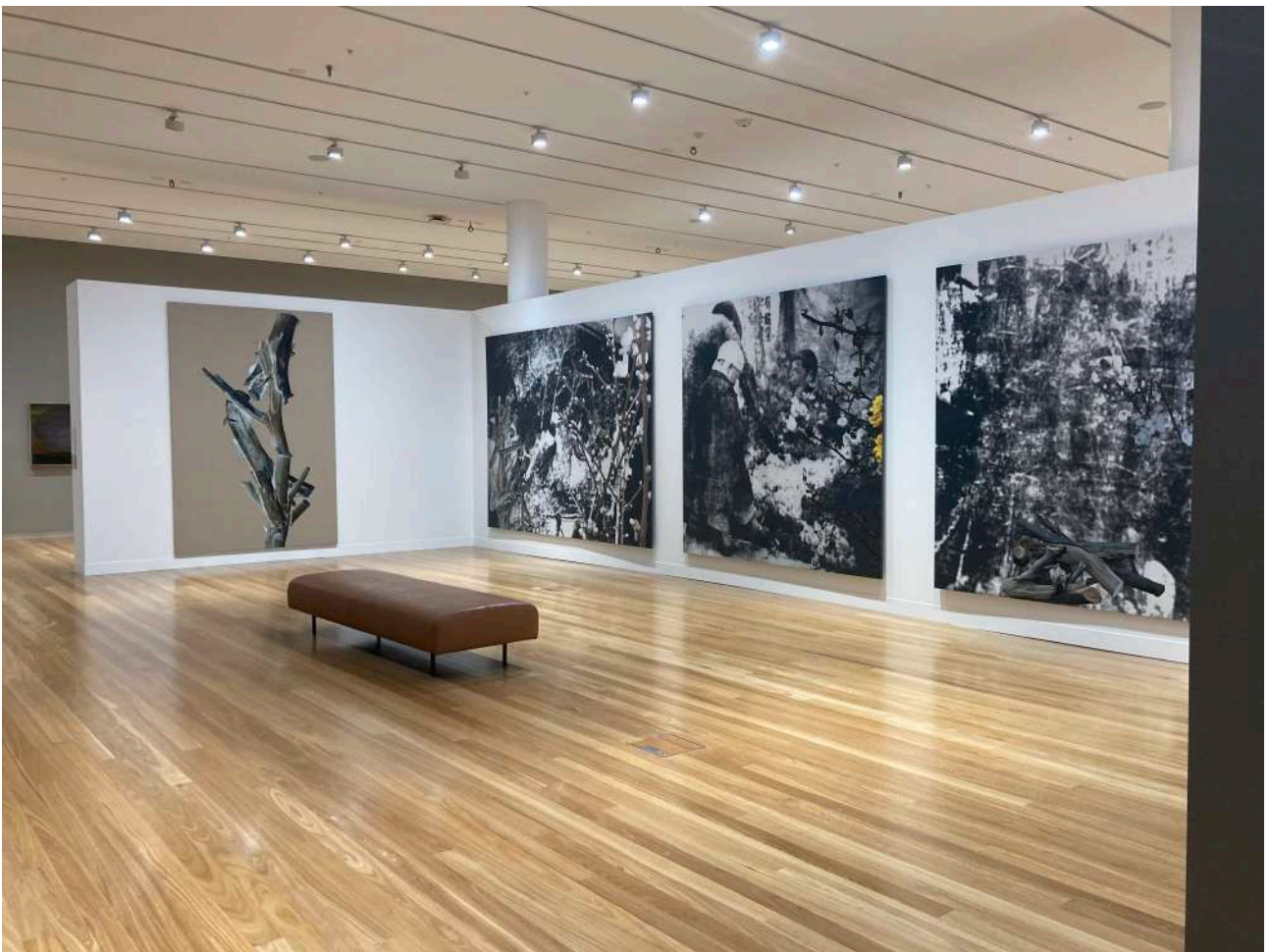
This is Fred, the Bunjil Place Gallery security guard. Fred helps to make sure the artworks and people are safe. You can say hello to Fred.



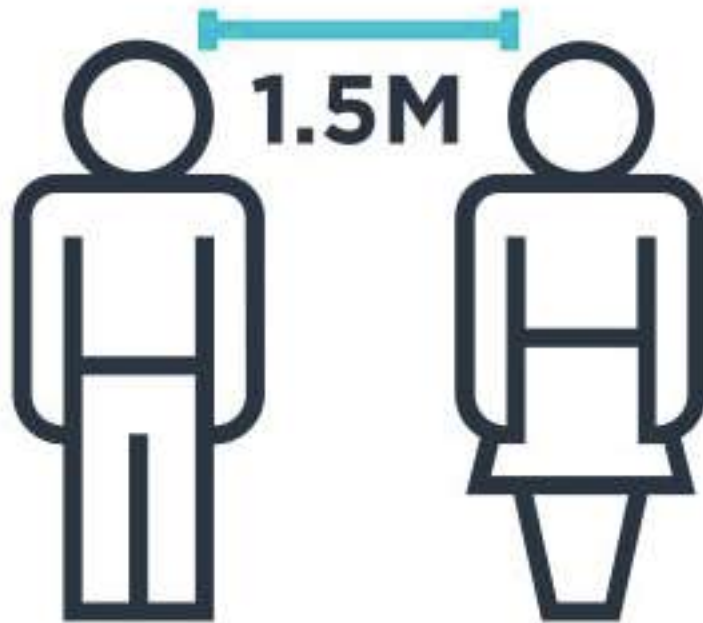
Some artworks are on the walls. There are colourful artworks, and black and white artworks. Other artworks are in display cases.



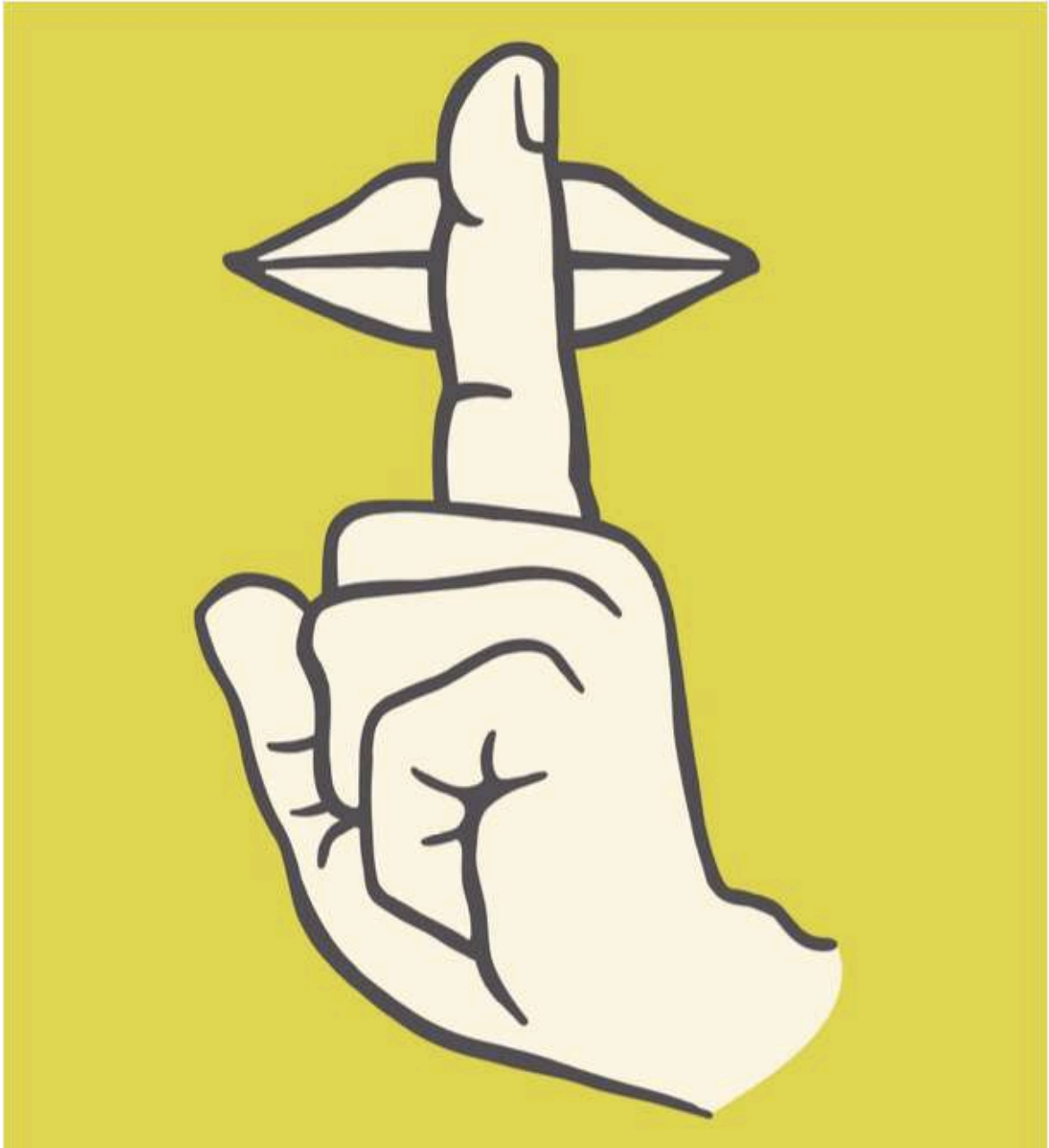
When you are inside the gallery, it is important to know the rules. You will follow the rules so you can enjoy your visit and have fun.



Stay 1.5m from other people.



Use your inside voice inside the gallery.



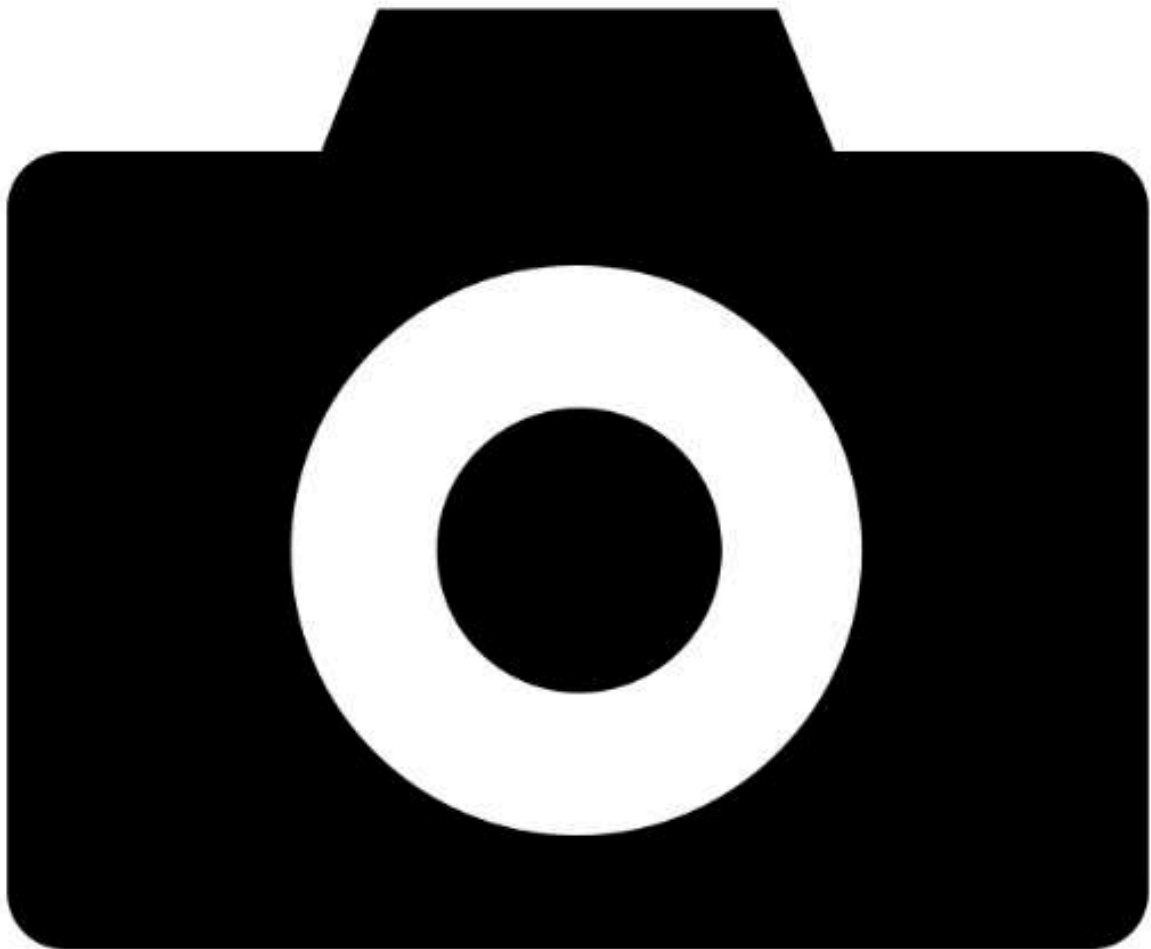
You cannot eat or drink inside the gallery.



Please keep your hands by your side, away from the artworks. The artworks need to stay safe and clean.



You can photograph or film in the gallery, with no flash turned on.



You will leave the gallery through another doorway and then exit Bunjil Place the way you entered.



You are always welcome back at Bunjil Place.

