

Quiet Hour at Bunjil Place Gallery and Library

This is Bunjil Place.



To enter Bunjil Place, please walk through the entry doors on the left side of the building (near the Bunjil Place Cafe).



If you have limited mobility, you are welcome to enter via the Bunjil Place Library Nook.



You may visit the Gallery or the Library first.

To visit the Gallery, you will go through the entry via the big glass sliding door. A staff member may welcome you at the entry.

If you have a backpack or large items, please place them in the white shelves in front of the Gallery desk.



Inside the Gallery, there are many artworks. You can read (or ask someone else to read out) the labels next to the artworks to learn more about the artist/artwork.

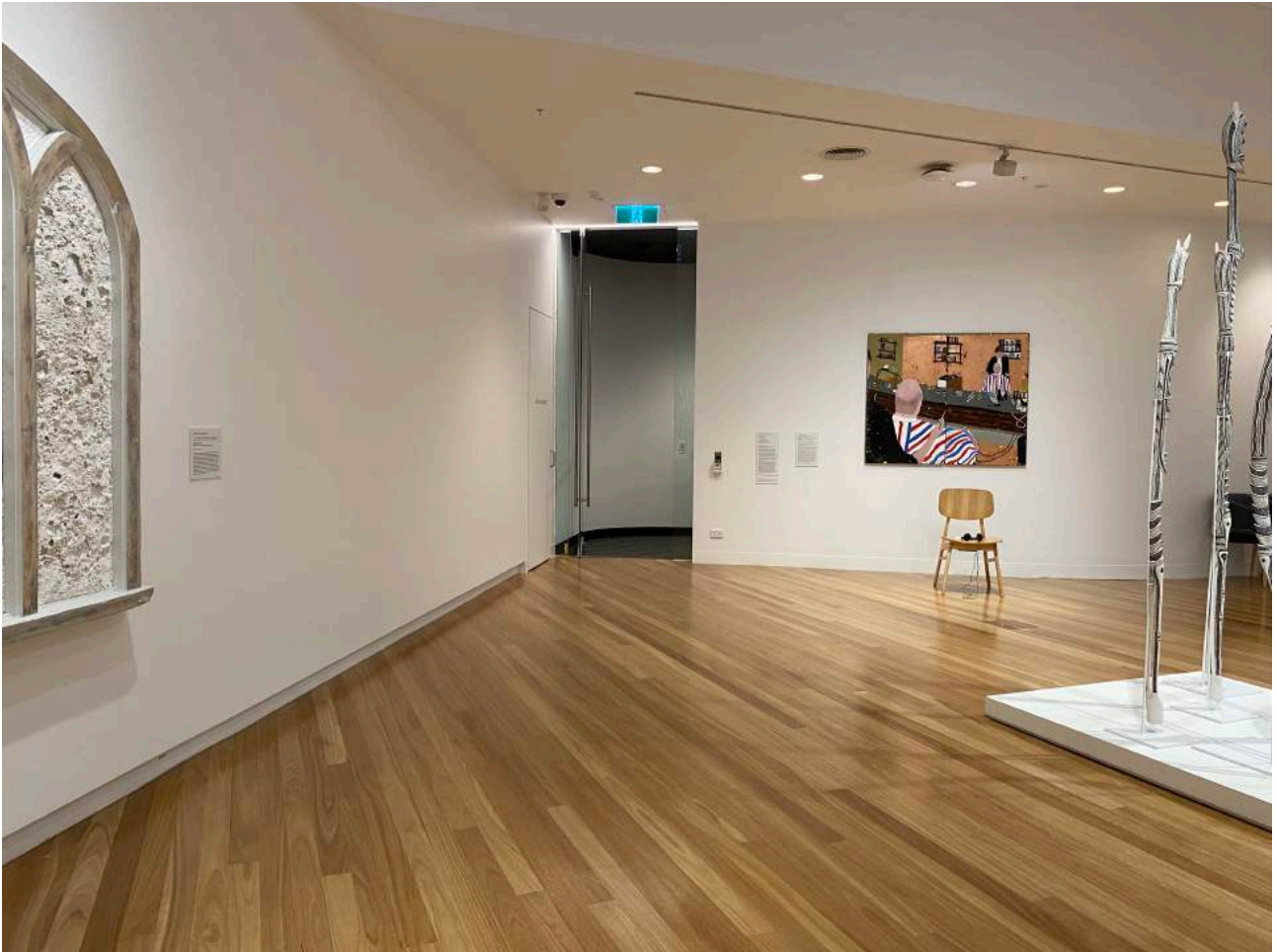


Please use walking feet only. No food or drinks are allowed inside the Gallery.

The artworks are precious. We can look at the artworks.



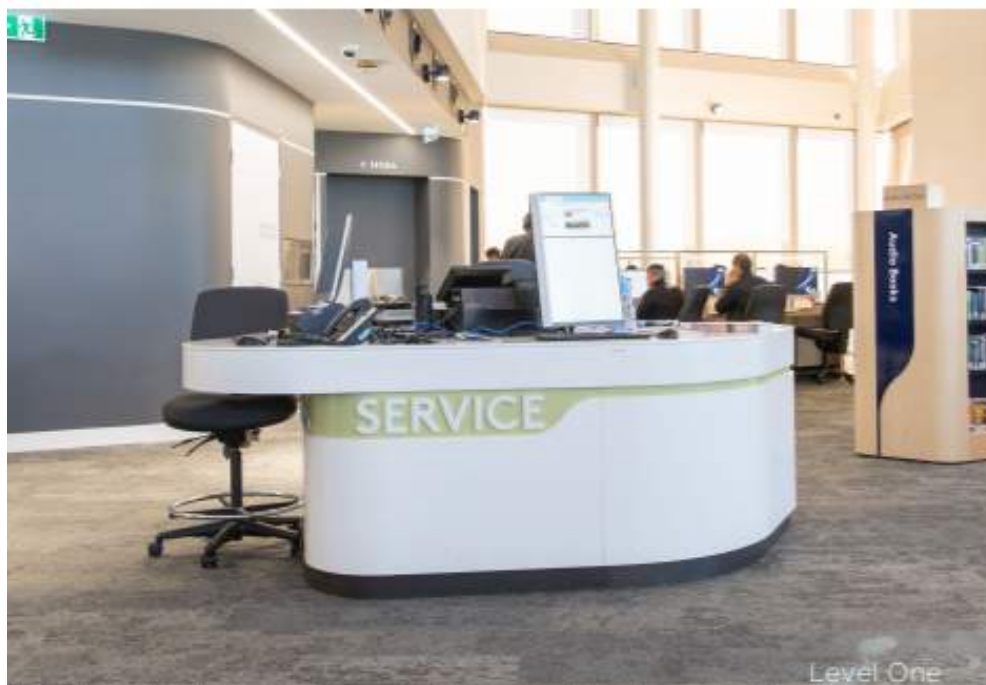
There is another doorway in the Gallery. This doorway is the exit.



You can visit the Library, and borrow books and other media.



You will need a library card for this service. The library staff can help you with your needs at the Service Desk.



There is a Quiet Space in the Library Kids Nook. There are nooks to read or lie down in.



When you are finished with your visit, you may leave Bunjil Place.

Thank you for visiting. We hope to see you again.

