



BUNJIL  
— PLACE —

Postdining



# Water Footprint

# Water footprint

The volume of freshwater used to produce a food, measured over the full supply chain.

# Grow



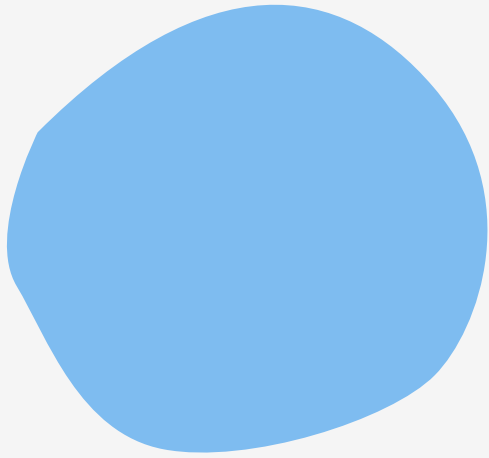
# Process



# Farm



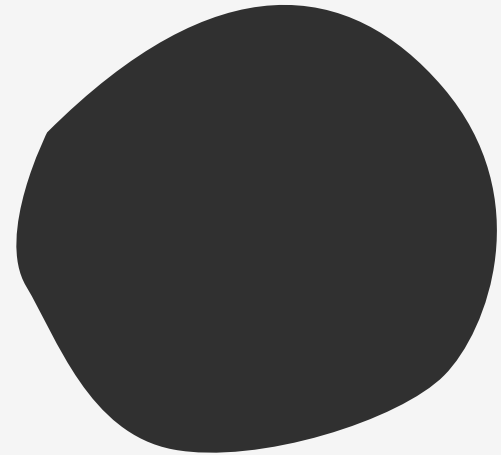
# Water footprint:



**Rain  
Water**



**Irrigation  
Water**



**Water to  
clean up  
pollution**

# Environmental impact



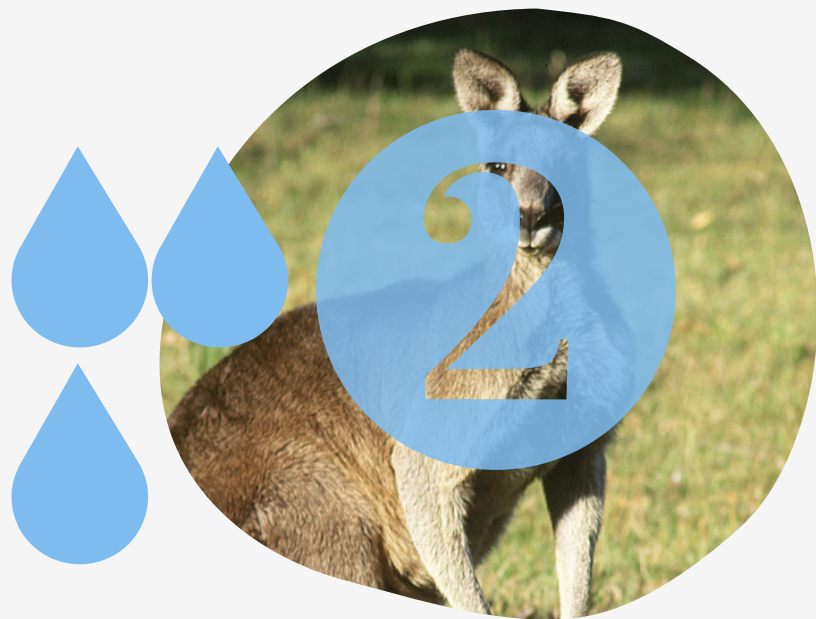
~90%

of the total global  
water footprint  
comes from  
agriculture

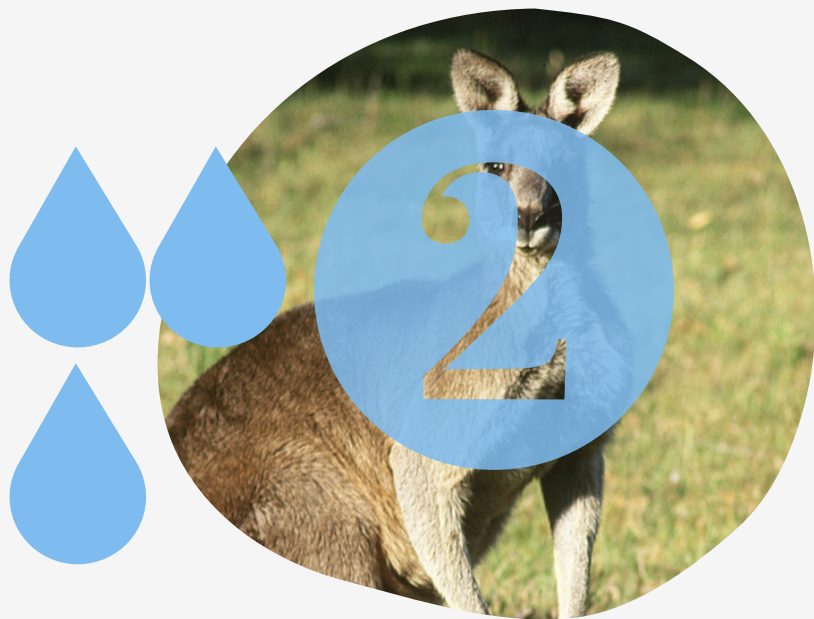
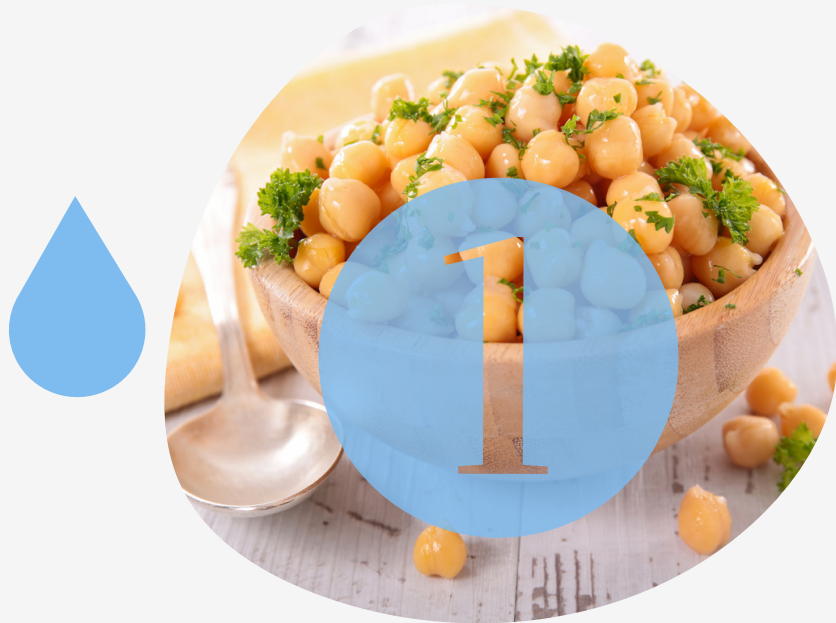
The food system is a valuable place to make changes to our global water usage for a sustainable future.

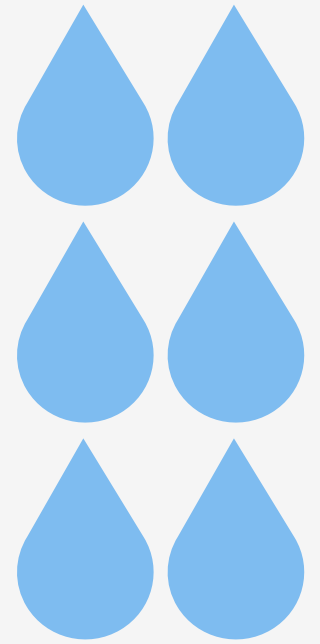


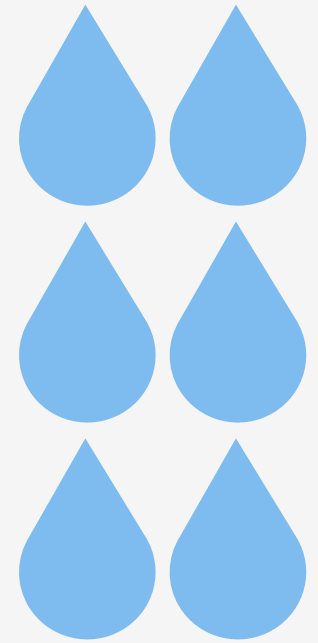










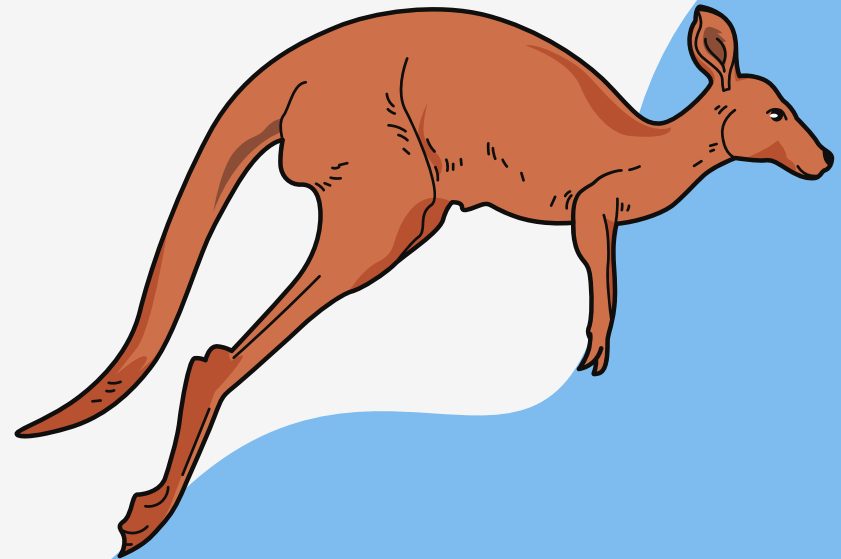




# LOW



**Why do  
Kangaroos have  
a lower footprint  
than other  
meat?**



# Future foods with lower water footprints

