



BUNJIL
— PLACE —

Postdining



Water Footprint

Water footprint

is the volume of freshwater used to produce the product, measured over the full supply chain.

Activity

**What is your
favourite food?
What water is
used to
produce it?**



Grow



Process



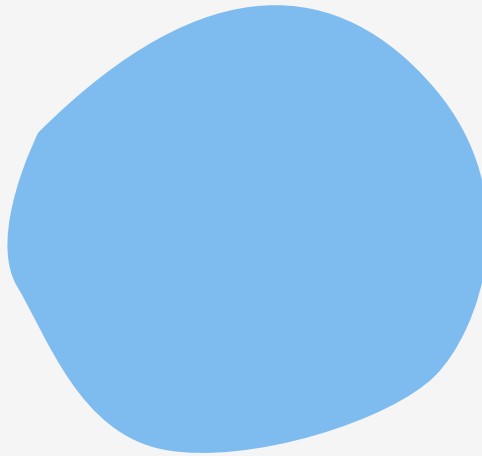
Farm



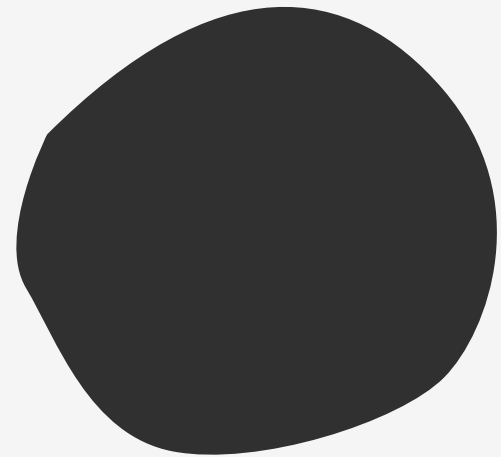
Water footprint:



**Rain
Water**



**Irrigation
Water**



**Water to
clean up
pollution**

Environmental impact...



92%

of the total global
water footprint
came from
agriculture in
1996-2005

The food system is a valuable place to make changes to our global water usage for a sustainable future.

Activity

In your table groups, discuss which of these foods has the highest water footprint and why?



Activity

In your table groups, discuss which of these foods has the highest water footprint and why?



What makes a **HIGH** water footprint?



What makes a **HIGH** water footprint?



98% of water footprint for farmed animals comes from the water footprint of their feed!

What makes a **HIGH** water footprint?

15415L of water
per 1 kilo of beef



3340L of water
per 1 kilo of chicken



What makes a **LOW** water footprint?



What makes a **LOW** water footprint?

Plants need water to grow, but they do not need to eat other plants. This removes a step where a large portion of water usage occurs.

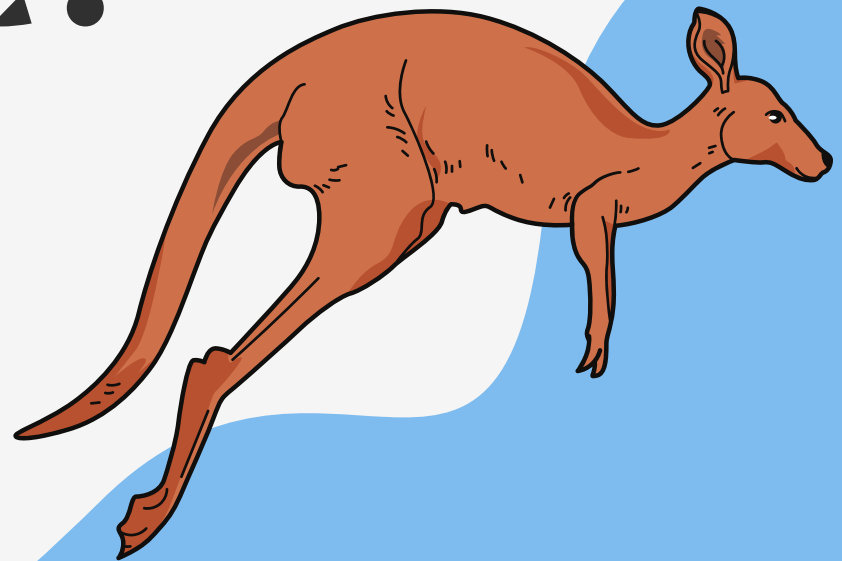


LOW



Why do kangaroos have a lower footprint?

Kangaroos are indigenous to the Australian environment, where there is less water. They have a much lower water footprint than all other red meat.



Future foods with lower water footprints

