



OPEN STUDIOS WEEKEND 2022

**SATURDAY 8 AND SUNDAY 9 OCTOBER
10.00 AM - 4.00 PM EACH DAY**

Get a glimpse behind the scenes as you take a self-guided tour of the studios, galleries and gardens of some of our makers from across the South East.


Enjoy a demonstration, take part in some art, add to your collection with unique, sustainable, locally made artwork, or, sign up to a new creative class. Painting, print making, weaving, photography and more.....there's plenty to see and do on this weekend of discovery.



LEANNE HUTCHINSON AT UP CLOSE AND PERSONAL STUDIO

Leanne's light filled studio and gallery is situated amongst the trees on her country property in Toomuc Valley. The views, the tranquility and friendly relaxed atmosphere attract many art students and visitors.


 [leannewilsonnutchinson](https://www.facebook.com/leannewilsonnutchinson)

 [upclose_with_leanne](https://www.instagram.com/upclose_with_leanne)



ANDREA HOPGOOD AT PAPERWORKS GALLERY AND STUDIO

Set amongst the gardens of the heritage listed residence, Quorn Cottage, this studio and gallery offers original artwork, hand-made gifts, art classes and monthly workshops. The garden is filled with quirky sculptures made from recycled items, once discarded as scrap, reincarnated by Andrea's husband, David.

 [paperworksgallery.org](https://www.paperworksgallery.org)

 [PaperworksGalleryBerwick](https://www.facebook.com/PaperworksGalleryBerwick)

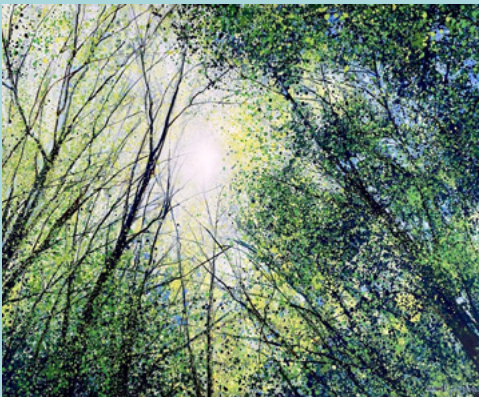


JANET MATTHEWS STUDIO

Join award-winning artist, Janet and her students for a 'pop up' exhibition and demonstrations throughout the weekend. Janet's individual style of combining coloured pencil and graphite has been described as "weaving magic with pencil".

 [janetmatthews.com.au](https://www.janetmatthews.com.au)

 [JanetMatthewsArtist](https://www.facebook.com/JanetMatthewsArtist)



MANDI POTGIETER STUDIO


Mandi paints intuitive atmospheric landscapes that capture the mood of nature. Her work is inspired by the complexity of nature, from the opposites of soft against rough textures, light and darkness to the ever changing elements in growth and climate, or the moods that are brought forth.

 [bluethumb.com.au/mandi-potgieter](https://www.bluethumb.com.au/mandi-potgieter)



HEATHER SHEPPARD STUDIO

Heather is experienced in various mediums and will be presenting *Inspired by Nature*, a collaborative exhibition with her students featuring artworks of flora and fauna. There will also be free "Butterflies" workshops which can be booked via the website.

 [heathersheppard.com](https://www.heathersheppard.com)



BERWICK ARTISTS SOCIETY AT OLD CHEESE FACTORY (SUNDAY ONLY)

This vibrant society was formed to provide an environment which encourages local emerging, professional and hobby artists to network, develop skills and contribute to art within the community. They meet and create in the Function Centre amongst the gardens of this beautiful historic site.

www.berwickartistsociety.com.au

[f berwickartistsociety](https://www.facebook.com/berwickartistsociety)

CHERYL EDWARDS AND MONIQUE CLIFT AT BLAK BOX STUDIO

Visit glass artist Cheryl for a hot shop demonstration and chat with Monique about her creative passions, printmaking and painting. Demonstrations will be held each afternoon from 1.30pm to 3.30pm, no bookings required.

[cherylwardos](https://www.instagram.com/cherylwardos)

www.moniqueclift.com.au

[moniquecliftartist](https://www.instagram.com/moniquecliftartist)



SOUTH EASTERN CONTEMPORARY ARTS NETWORK (SECAN) AT GATE 6 GALLERY

Meet SECAN artists Jennie-Maree Tempest, Heather Merrett, Janine Farinski, Phil Nevin, Jenni Ivins, Elma Young and Di Lockwood as their diverse processes including textiles, painting, drawing, printmaking, contemporary basket weaving and mixed media.

www.secan.com.au

TOOMUC VALLEY ARTISTS GROUP AT TOOMUC VALLEY COMMUNITY HALL

This art group has been together for 11 years meeting on a weekly basis to share ideas, mentor and create art in many mediums including pastel and pencil drawing, oil, acrylic and watercolour paints and scratchboard.

suerobertsonartist@outlook.com

Keep up to date with the Arts in Casey

[f artsincasey](https://www.facebook.com/artsincasey) [ig casey_arts](https://www.instagram.com/casey_arts)

Contact the City of Casey arts team:
arts@casey.vic.gov.au or 9705 5200



1. **Up Close and Personal Studio**
24 Short Lane,
Pakenham
2. **Paperworks Gallery**
26 Inglis Road,
Berwick
3. **Janet Matthews Studio**
6 Tom Gearon Court,
Narre Warren North
4. **Mandi Potgieter Studio**
18 Sittella Drive,
Berwick
5. **Heather Sheppard Studio**
7 Wendy Court,
Hampton Park
6. **Old Cheese Factory
(Sunday only)**
34 Homestead Road,
Berwick
7. **Blak Box Studio**
14-16 Rheanva Street,
Berwick
8. **Gate 6 Gallery and Studio**
Gate 6, Akoonah Park,
Cardinia Street,
Berwick
9. **Toomuc Valley
Community Hall**
15 Leppitt Road,
Toomuc Valley,
Pakenham



Care has been taken to ensure all the venues, except the Toomuc Valley Hall are wheelchair accessible as of print.

Front cover image: Monique Clift, Devils Blush in Italian vase, Oil pastel on board, 2021



TIS: 131450 المترجم الفوري 翻译 مترجم شفاهي ਦੁਆਰੀਆ ਠਾਠਠ ਪਰਿਵਰਤਨ

