

Visual Guide

Jennifer Mills: In the echo chamber Exhibition

Finding the gallery



View of Bunjil Place.



The right-side entrance to Bunjil Place.



The entrance to the bathrooms. The men's toilets are to the left of the staircase and the women's and gender-neutral toilets are to the right of the staircase.

- The *Jennifer Mills: In the echo chamber* Exhibition is at Bunjil Place, 2 Patrick NE Dr, Narre Warren.
- You can find information about how to get to Bunjil Place and where to park [here](#).
- There are two main entrances to Bunjil Place. When facing the building, enter through the door to the right. This is the closest entrance to the gallery.
- The exhibition is free. You can stay at the exhibition for as long as you like.
- When you enter the building, you will see a reception desk outside gallery. You will need to talk to the person at the reception desk before you go into the gallery. If no one is at the reception desk, walk into the gallery and speak to the person inside. They will ask for your postcode.
- The bathrooms are located to the left of the entrance you came through. The toilets are behind the staircase.
- The bathrooms have hand dryers and automatic air fresheners.
- You can ask any staff member to unlock the accessible toilets.

Entering the exhibition:



Main door of the gallery. The gallery desk is on the right.



Shelf for items that are not allowed in the gallery.



Door on the left for exhibition entry.

- You can enter the exhibition through the main door of the gallery.
- You are allowed to bring a small bag into the gallery, but big bags, library bags, backpacks, food and drinks are not allowed. These must be left in the brown shelves to your right. You can find more information about what you can and cannot bring in [here](#).
- You can enter the exhibition through the main door of the gallery, then take the door to the left.
- Phones and tablets are welcome but please keep them on silent or use headphones.
- You can also bring in sensory tools if you would like.
- You can take photos without flash.
- You cannot touch the artwork.
- If you feel over-whelmed and need assistance, there are staff who can assist you.

In the exhibition:



The room you can enter to view artwork.



Example of white line to stand behind when viewing artwork.



The black stools and drawing art supplies you can borrow.



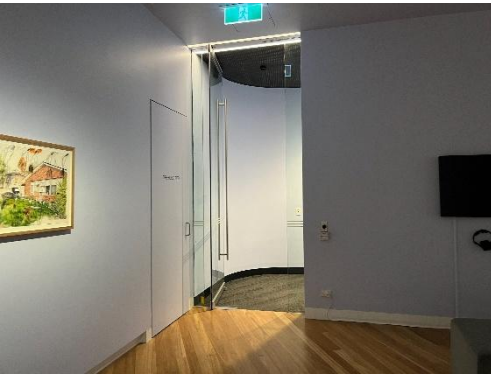
Example seat you can sit on and headphones you can wear to watch video.

- When you enter the exhibition, there will be instrumental music playing. There are two different songs: one is calm, one is upbeat. The volume is consistent throughout the exhibition space.
- The lighting is low-medium.
- There is a purple room in the centre of the gallery with artworks inside. You can walk into this room to view artworks. If you are overstimulated, you can walk away.
- There are unframed artworks in the exhibition. These artworks are found along the back wall and inside the extra room. There is a strip of white tape on the floor you cannot cross. Please stand behind the line.
- There are seats throughout the exhibition. You can sit on them and stay as long as you like.
- Between 11am-2pm, there is a drawing activity in the gallery. You can grab a black stool, a clipboard with paper, an Art Card, and a pack of pencils. You can follow the leaflet instructions or draw at your own pace. You can set the seat up anywhere in the gallery and sit down to draw. You can ask staff members for help with the instructions.
- There is a television with two pairs of headphones. You can put on the headphones to listen and watch the video. There are seats you can sit on.

Exiting the exhibition:



The Art Card you can take home. The trolley to return your art supplies to.



The exhibition exit.



Exhibition pamphlet you can take home.

- If you did the drawing activity, you can take home your drawing and Art Card, but you cannot take home the art supplies. Please return them to the trolley.
- When you are ready to leave, exit the exhibition through the left door then through the main door of the gallery.
- There is an exhibition pamphlet available that you can take home. These can be found on the wall above the brown shelves.
- If you left your bag or drinks in the brown shelves, collect it before you leave.
- To exit Bunjil Place, exit through the same door you entered.